

Collapse or Explosion?

A photo essay  
by Liam Scheff

**THESE PEOPLE ARE FALLING, BUT NOT EXPLODING...**





THESE BUILDINGS ARE  
FALLING OVER.



THEY ARE ALSO NOT  
EXPLODING.





**THESE BUILDINGS HAVE COLLAPSED, MOST DUE TO EARTHQUAKE, OR TO POOR CONSTRUCTION AND AGE.**

NOTE THAT THEY ARE NOT EXPLODING OR BURSTING INTO FLAMES OR SENDING PARTS OF THEMSELVES FLYING HUNDREDS OF FEET THROUGH THE AIR AT **CANNONBALL SPEED.**



WHERE THE BUILDINGS HAVE COLLAPSED, THE FLOORS OR ROOFS AND OTHER SOLID PARTS OF THE BUILDINGS STILL HOLD TOGETHER AND ARE STACKED ON TOP OF EACH OTHER...

...THESE ARE CALLED **PANCAKES**, THOUGH YOU WOULDN'T WANT TO EAT THEM.

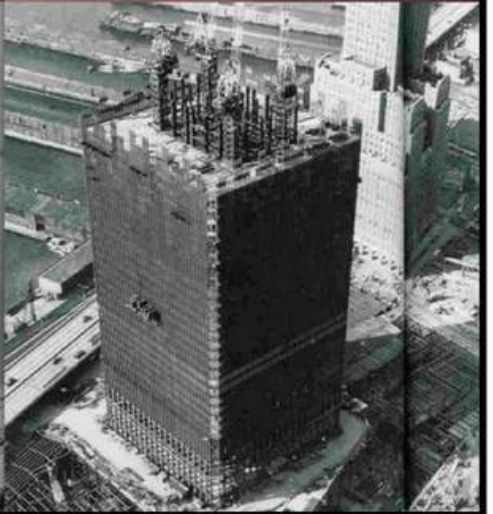
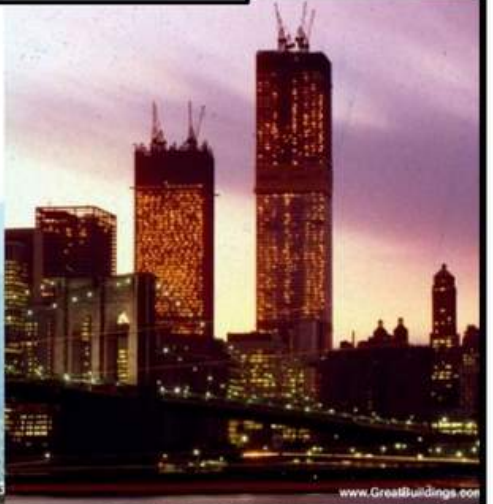


**THESE BUILDINGS WERE ON FIRE, SOME FOR A LONG, LONG TIME, AND ON EVERY FLOOR. THE BUILDINGS WERE MADE OF METAL. AND THE NEXT DAY, ALL OF THEM WERE STILL STANDING.**



**THESE BUILDINGS WERE ALSO MADE OF STEEL:**

THEY WERE MADE OF A LOT OF STEEL, AND BUILT IN THE LATE 1960S TO EARLY 1970S, WHEN ARCHITECTS HAD BEEN MAKING BUILDINGS FROM STEEL FOR A LONG TIME. THE STEEL WAS THICK AND WIDE, AND WELDED TOGETHER AT EVERY SEAM.



EACH BUILDING WAS REALLY **TWO BUILDINGS** - THE OUTSIDE STEEL STRUCTURE, AND THE INSIDE CORE, WHICH WAS REALLY A SECOND, INTERNAL SKYSCRAPER, CAPABLE OF HOLDING THE WHOLE BUILDING UP, IF THE OUTSIDE WAS DAMAGED.



THESE BUILDINGS WERE FAMOUS AND GRAND AND WONDERFUL. SOME PEOPLE THOUGHT THEY WERE UGLY, BUT THEY WERE GLAMOUROUS, AND THEY SHOWED A COUNTRY WITH LIMITLESS POSSIBILITIES:



THE SKY IS THE LIMIT - AND MAYBE WE CAN EVEN GO HIGHER!

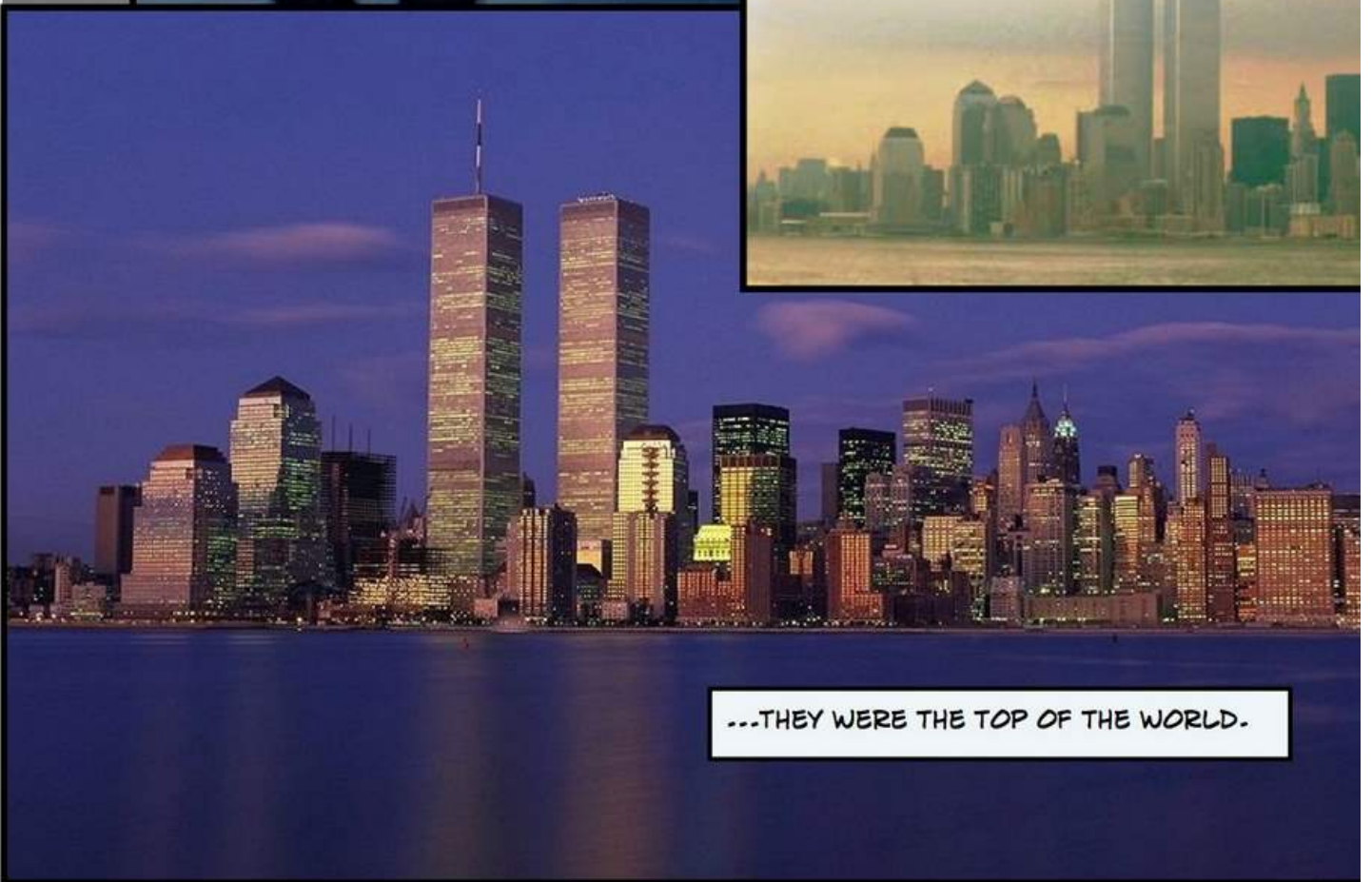
THEY WERE SYMBOLS OF THE **AMERICAN DREAM**, AND OF THE POSSIBILITIES THAT THIS COUNTRY OFFERED TO NEWCOMERS AND CITIZENS ALIKE.





THEY WERE NEW  
YORK...

THEY WERE COLE PORTER...



...THEY WERE THE TOP OF THE WORLD.



NEW YORK 16 h 30



New York via Pakistan International. C'est des avions qui ont été spécialement conçus pour New York. Départ d'Orly Sud, offrant les meilleures correspondances avec les villes de province. Une nouvelle preuve de l'efficacité PIA.

PIA est une compagnie internationale au développement spectaculaire : 3 000 000 de passagers cette année, un décollage toutes les 8 minutes.

Un succès qui s'explique tout d'abord par la satisfaction des passagers. Pour un tel travail, rien de mieux que New York ou 60 autres grandes métropoles dans le monde, parties via PIA.

Great people to fly with.



# STEEL STANDING

Surviving the  
significant properties of  
steel — strength  
and flexibility —  
the World Trade  
Center and the Empire  
State Building remain  
the best proof of the  
New York City design.

**RESERVE STRENGTH**  
Structures built with steel can dramatically  
withstand the unusual dynamic forces  
imposed by a catastrophic event — whether  
from an earthquake, a hurricane  
or even an explosion.

**FLEXIBILITY**  
Like the Empire State Building,  
now celebrating its 50th year, an  
steel framed structure lends itself  
easily to repair, retrofit, renovation  
and additions.

Years of these landmarks have long realized, the choice is obvious when it comes to selecting  
dependable building material available today... and always,  
Steel. The only one that stands the test of time.



THESE  
BUILDINGS  
WERE  
TOUGH, SO  
TOUGH, AND  
BUILT TO  
WITHSTAND  
ANY  
DISASTER  
THAT COULD  
COME TO  
THEM.

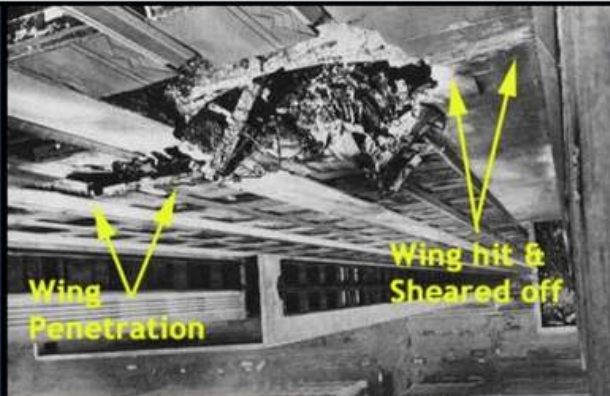
EVEN COOKIE-MONSTERS.

THEY WERE EVEN BUILT TO WITHSTAND A DIRECT HIT FROM THE **LARGEST JETLINER** THAT WAS FLYING AT THE TIME OF CONSTRUCTION - A BIG PLANE, THE **BOEING 707**.





THE ARCHITECTS AND ENGINEERS HAD TO TAKE PRECAUTIONS AGAINST SUCH EVENTS, BECAUSE **THE EMPIRE STATE BUILDING** WAS HIT BY A US ARMY BOMBER - A B-25, ON ITS 79TH FLOOR, AND THAT CAUSED A FIRE, AND KILLED THE THREE CREWMAN, AND 11 OFFICE WORKERS, AND INJURED TWO DOZEN MORE.



**THE BUILDING ITSELF WAS FINE, OF COURSE, BECAUSE IT WAS MADE OF STEEL, EVEN THOUGH IT WAS BUILT 40 YEARS BEFORE THE TWO GRAND NEWCOMERS TO THE NEW YORK SKYLINE.**

THE BUILDING IN THE LOWER LEFT-HAND CORNER IS OF COURSE, NOT THE EMPIRE STATE BUILDING. IT IS NOT EVEN A STEEL-FRAMED BUILDING. IT IS A REINFORCED CONCRETE APARTMENT BUILDING THAT WAS ALSO HIT BY AN AIRPLANE - A SMALLER AIRPLANE TO BE SURE - BUT AN AIRPLANE NONETHELESS. HERE IT IS, WITH ITS SMALL FIRE, THAT WAS PUT OUT EVENTUALLY. YOU CAN READ ALL ABOUT THAT ONLINE.



SO, THESE TWO  
SKYSCRAPERS WERE  
DESIGNED WITH  
AIRPLANE IMPACTS  
IN MIND. IN FACT,  
THE CONSTRUCTION  
MANAGER FOR THE  
TWIN TOWERS  
PROJECT SAID THAT  
HE FELT THE  
BUILDINGS COULD  
EVEN WITHSTAND  
"MULTIPLE  
IMPACTS" FROM  
JETLINERS.

HERE ARE SOME BUILDINGS\*  
THAT WERE ON FIRE FOR A  
LONG TIME, AND BURNT  
THEMSELVES TO THEIR  
FRAMES....

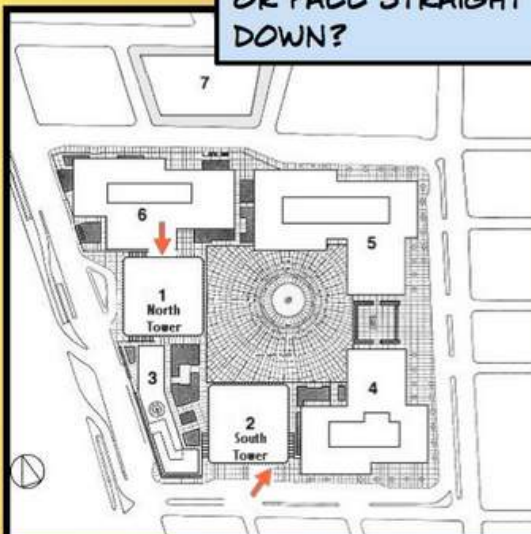
YOU CAN SEE THE FIRE IN THE  
MIDDLE IMAGE. AT THE TOP  
AND BOTTOM YOU CAN SEE  
WHAT WAS LEFT THE NEXT  
DAY.

BOY, DID THOSE  
BUILDINGS BURN.  
BUT THEY DID NOT  
EXPLODE, NOR DID  
THEY FALL DOWN.



\*WTC 5 AND 6

THEY WERE IN A  
COMPLEX OF  
BUILDINGS THAT DID  
BURST INTO FLAMES  
AND ALSO EXPLODE  
AND FALL DOWN,  
WHICH WE WILL GET  
TO IN A MOMENT.  
WHY DID THESE  
BURN AND BURN  
AND NOT EXPLODE  
OR FALL STRAIGHT  
DOWN?





THESE ARE EXPLOSIONS, THIS IS WHAT  
EXPLOSIONS LOOK LIKE.



USGS

OR, THAT IS, THREE OF THEM ARE EXPLOSIONS,  
AND ONE OF THEM IS NOT SUPPOSED TO BE.

CAN YOU TELL THE DIFFERENCE?



**ONE OF THE EXPLOSIONS** (THAT ISN'T SUPPOSED TO BE AN EXPLOSION) IS ONE OF THE TWO TOWERS MENTIONED ABOVE, WHICH WERE EACH MADE OF DENSE WELDED STEEL, STACKED LIKE A **CASTLE WALL OF THICK METAL**, WITH THEIR CORES HOLDING STRONG, EVEN WHEN THE OUTSIDE SWAYED.



**THE LEAD STRUCTURAL ENGINEER** FOR THE TWIN TOWERS SAID THAT THE BUILDINGS SURVIVED THE IMPACT FROM THE JET AIRPLANES THAT HIT THEM, AND THAT THE **"ROBUSTNESS OF THE TOWERS WAS EXEMPLARY."** AND STILL, "THE UNIMAGINABLE HAPPENED." (THAT'S MR. LESLIE ROBERTSON, YOU CAN LOOK HIM UP).

RIGHT, I FORGOT - THAT'S WHAT HAPPENED. TWO AIRPLANES HIT THE TWIN TOWERS - ONE AIRPLANE HIT EACH. **JETLINERS, ABOUT THE SIZE OF THE BOEING 707.** THEN THERE WAS A FIRE ON THE FLOORS WHERE THE AIRPLANE HIT, THE FIRE SPREAD UPWARD A BIT, AND THEN, IN ABOUT AN HOUR, THE BUILDINGS EXPLODED - OR COLLAPSED - OR SOMETHING. **TURNED INTO DUST,** AND SPREAD THEMSELVES OVER ALL OF MANHATTAN.



**THE OFFICIAL EXPLANATION DOESN'T TELL** WHAT HAPPENED WHILE THEY WERE EXPLODING, OR FALLING, ONLY THAT THE STEEL WAS WEAKENED WHERE THE AIRPLANES HIT, AND **THE STEEL SAGGED** ON THE FLOORS, AND THE **FLOORS PULLED AWAY** FROM THE OUTSIDE WALL... AND SO THE FLOORS FELL DOWN. THAT'S THE OFFICIAL EXPLANATION.



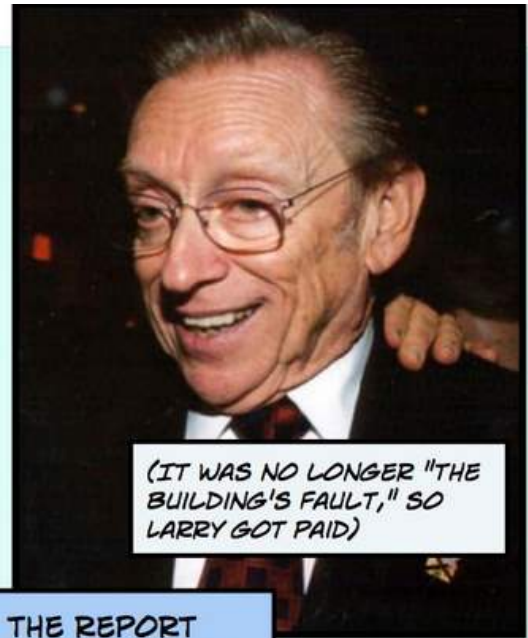
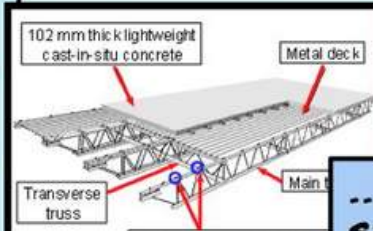
OR, I SHOULD SAY...**IT WAS THE OFFICIAL EXPLANATION,** UNTIL THE OWNER OF THE BUILDINGS, **MR. LARRY SILVERSTEIN,** COMPLAINED THAT IF THE FLOORS HAD PULLED AWAY FROM THE WALLS, HE WOULDN'T BE ABLE TO COLLECT HIS INSURANCE MONEY. THAT IS, IF THE FLOORS PULLED AWAY FROM THE WALLS, THEN IT WAS **THE BUILDING'S FAULT,** YOU SEE. AND THAT MEANT **NO INSURANCE MONEY** FOR MR. SILVERSTEIN.





SO, A NEW OFFICIAL EXPLANATION WAS ENTERED INTO THE RECORD, WHICH HAPPENS TO BE **THE EXACT OPPOSITE** OF THE FIRST. BUT IT'S THE OFFICIAL STORY IN ANY CASE. **IT GOES LIKE THIS:**

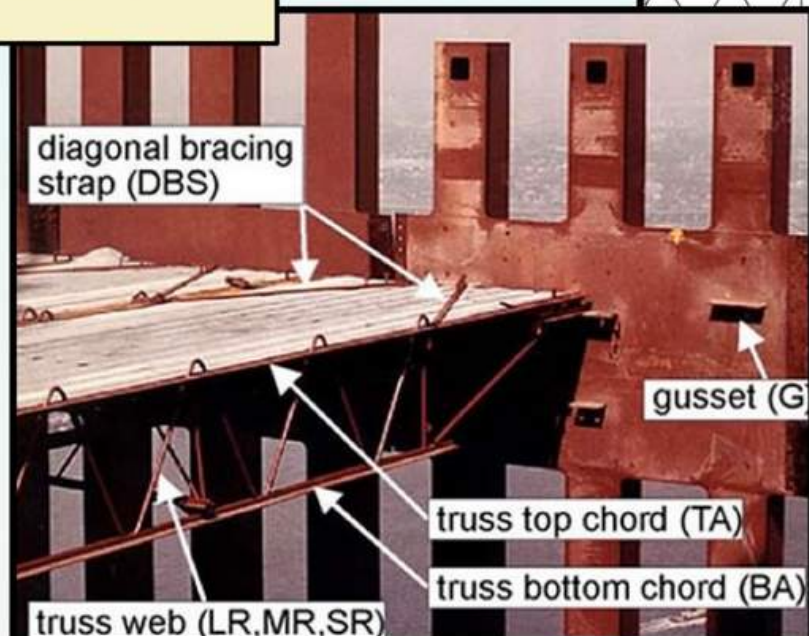
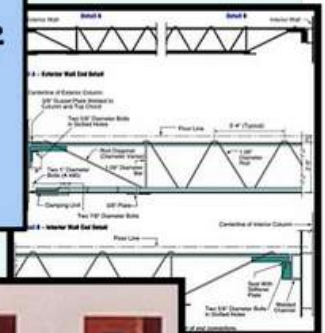
THE FIRE CAUSED THE FLOORS TO **SAG**, AND THE FLOORS **PULLED** AGAINST THE WALL, BUT THE RIVETS AND WELDING WERE SO STRONG - **NOT WEAK**, LIKE IN THE FIRST EXPLANATION - BUT SO VERY, VERY STRONG, THAT **THEY PULLED THE WALLS INWARD** AND CAUSED EVERYTHING TO **BEGIN TO COLLAPSE...**



(IT WAS NO LONGER "THE BUILDING'S FAULT," SO LARRY GOT PAID)

...BUT THE REPORT **STOPS AT "BEGIN."**

IT JUST GETS TO THE SAGGING AND PULLING AWAY, OR PULLING INWARD PART. IT DOESN'T GET INTO WHAT HAPPENED AFTER THE FIRST FLOOR FELL DOWN.





THAT IS, THE GOVERNMENT REPORT  
DOESN'T GIVE ANY EXPLANATION FOR  
HOW THE BUILDINGS **ACTUALLY BLEW**  
**UP, OR CAME DOWN.**

OR HOW **THE IMMENSE STRENGTH**  
**OF THE WELDING** AND RIVETS PULLED  
THE WHOLE BUILDING APART AND **BLEW**  
**IT UP INTO DUST** THAT COVERED ALL  
OF MANHATTAN---SOMEHOW.



I DON'T THINK IT'S A VERY  
GOOD EXPLANATION  
MYSELF, SO I'D LIKE TO  
ASK YOUR HELP.



THESE PICTURES ARE HARD TO LOOK AT. THEY'RE HARD FOR ME TO LOOK AT, THEY'VE BEEN HARD TO LOOK AT FOR A LONG TIME.



BUT CAN YOU TELL ME, ARE THESE BUILDINGS "PANCAKING" DOWNWARD, THE FLOORS STACKING UP ON TOP OF THE NEXT..

---EACH BREAKING THE STEEL WELD THAT HOLDS IT TIGHTLY AT HUNDREDS OF POINTS TO THAT CENTRAL CORE?

IS THAT WHAT'S HAPPENING HERE?

OR ARE THESE BUILDINGS EXPLODING? BURSTING OPEN FROM SOME FORCE, SHATTERING THEIR PIECES, THEIR INSIDES, THEIR EXTERIORS AND INTERIORS? DECIMATING THEIR STRONG, THICK, STEEL WELDED CENTRAL CORE, SOMEHOW TURNING THICK CONCRETE TO DUST, AND STEEL INTO DISTORTED AND TWISTED SLIVERS?

PLEASE, HAVE A LOOK, AND LET ME KNOW WHAT YOU THINK.

THIS IS TOWER ONE. YOU CAN SEE THAT THERE IS A FIRE, AND THEN THE TOP STARTS TO LOWER ITSELF INTO...WELL, ITSELF.



IT SEEMS TO BE BLOWING ITSELF OUTWARD INTO MORE AND MORE DUST AND DEBRIS. YOU CAN SEE THE NEEDLE ON TOP DESCEND AND DESCEND, AND THEN JUST DISAPPEAR IN THE CLOUD OF...

...OF WHAT USED TO BE THE BUILDING, OF THE CONCRETE THAT SOMEHOW TURNED INTO VERY FINE EXPLODING POWDER.

BY THE END, THE TOP OF THE BUILDING IS GONE, IT HAS TURNED TO DUST. THERE IS A GREAT DEAL OF BUILDING BENEATH IT. BUT NOT FOR LONG.



WITH MOST OF THE BUILDING ON TOP OF IT GONE, HAVING SOMEHOW TURNED INTO EXPLODING CONCRETE, WHAT IS PUSHING ON THE REST OF THE BUILDING BENEATH IT, OR CAUSING MORE 'SAGGING AND PULLING,' THAT ALSO MAKES ALL OF IT, ALL THE WAY TO THE BOTTOM, ALSO TURN INTO EXPLODING CONCRETE?

NEXT IS THE SAME BUILDING FROM A LITTLE HIGHER UP.

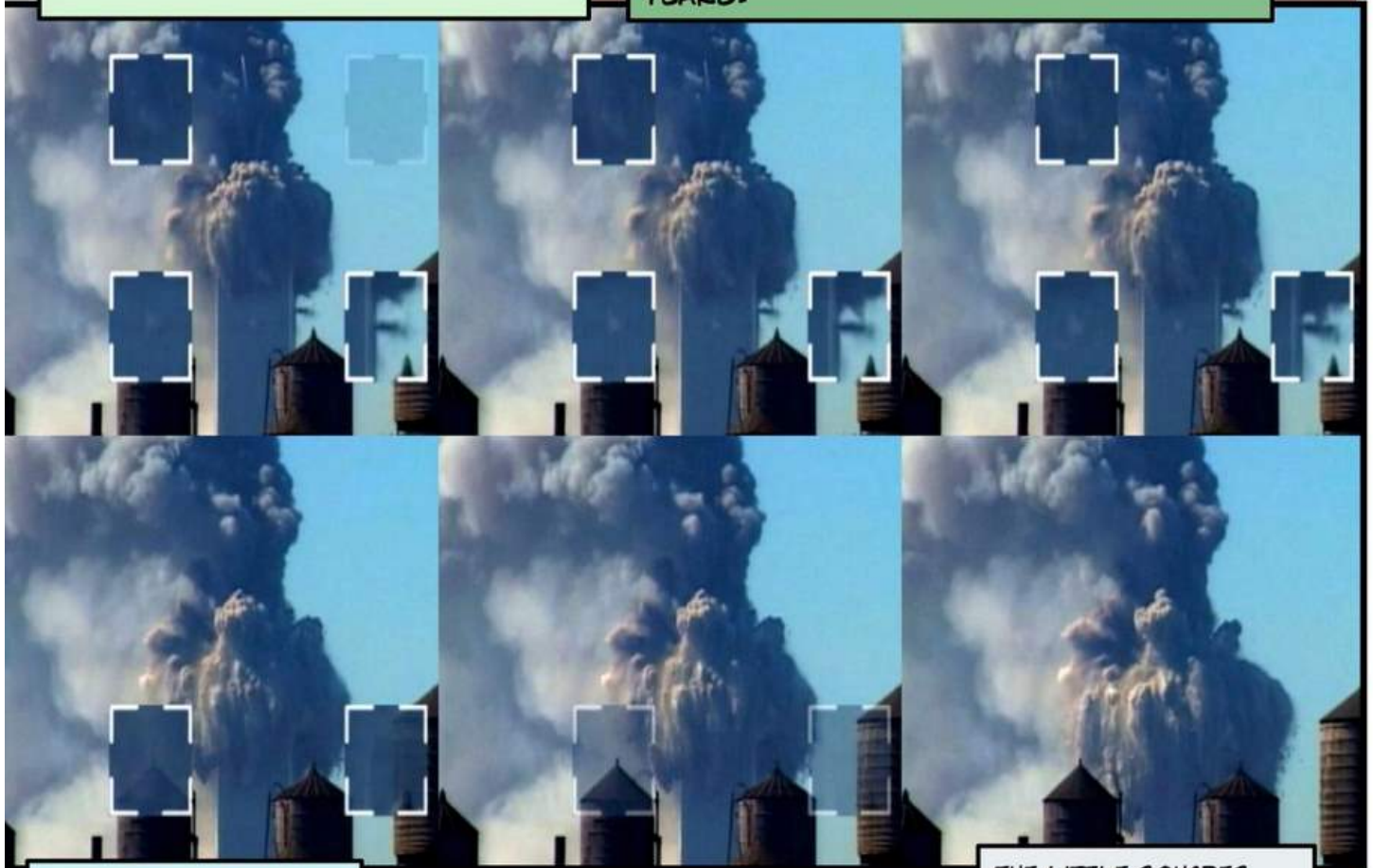


HOW DID ALL OF THAT CONCRETE LEARN TO EXPLODE INTO THOSE GIANT PLUMES OF DUST?

WAS THERE A HIDDEN VOLCANO IN THE BUILDING?

NOW WE'RE FARTHER AWAY. YOU CAN SEE THE BUILDING AT A DISTANCE, AS THE TOP OF THE BUILDING EXPLODES, WITH ITS MAGICAL EXPLODING CONCRETE...

...THAT ALSO TEARS THE THICK STEEL INTO RIBBONS AND THROWS IT HUNDREDS OF FEET AWAY FROM WHERE IT WAS SITTING COMFORTABLY FOR ALL THOSE YEARS.



AFTER JUST A FEW SECONDS, THE WHOLE TOP OF THE BUILDING LOOKS LIKE THE PUFFY TOP OF **MT. SAINT HELENS**, WHEN IT EXPLODED AND BURIED A LOT OF WASHINGTON IN DUST AND ROCK AND ASH AND SOOT.

HOW DID THAT HAPPEN? AND WHAT'S LEFT TO PUSH DOWN ON THE BUILDING BENEATH IT?

THE LITTLE SQUARES ARE MAGNIFICATIONS OF WHERE YOU CAN SEE CONCRETE EXPLODING IN OTHER PLACES ON THE BUILDING.

EXCEPT I SUPPOSE THAT MAYBE THE CONCRETE IN THE FLOORS BELOW **CAUGHT SOMETHING**, LIKE A VIRUS, FROM THE CONCRETE THAT HAD ALREADY EXPLODED, AND COULDN'T STOP ITSELF FROM EXPLODING TOO?





HERE IT IS AGAIN, INFECTIOUS EXPLODING CONCRETE,  
CAUSED BY SAGGING AND PULLING, OR SOMETHING...



**THIS IS TOWER TWO:**

YOU CAN SEE THE TOP BEGIN TO TILT OVER AND OVER, LIKE IT'S GOING TO FALL ALL THE WAY DOWN. BUT IT DOESN'T.



IT STARTS TO FALL STRAIGHT DOWN, THEN, IT ALSO CATCHES THE EXPLODING CONCRETE BUG, AND TEARS ITSELF APART ALL OVER THE PLACE, UNTIL IT'S JUST A CLOUD OF DUST.

SOON, THERE'S NOTHING LEFT ON TOP OF THE BUILDING, BUT IT'S TOO LATE, BECAUSE THE REST OF THE TOWER MUST HAVE **ALREADY CAUGHT THE VIRUS**, AND NOW IT TOO WILL EXPLODE ALL THE WAY DOWN TO THE GROUND.



HERE IT IS AGAIN. AHHH-CHOOOOO! IT CATCHES THE  
CONCRETE EXPLOSION BUG, AND IT'S ALL OVER...





THIS IS THE FIRST BUILDING AGAIN.



THE TOP HAS EXPLODED INTO DUST, BUT FOR SOME REASON, THERE IS A LINE OF MAGICAL EXPLODING CONCRETE...



...MOVING LIKE AN ADVANCING ARMY AT FULL GALLOP DOWN ALL FOUR SIDES OF THE BUILDING, EQUALLY, AT THE SAME SPEED...

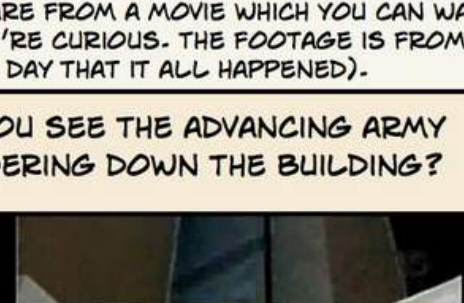
...AT THE SAME HEIGHT, ALL INFECTING THE EXISTING BUILDING WITH THE MAGICAL EXPLODING CONCRETE VIRUS.



HERE IT IS AGAIN, TURNED INTO A PHOTO-NEGATIVE

(THESE IMAGES ARE FROM A MOVIE WHICH YOU CAN WATCH YOURSELF, IF YOU'RE CURIOUS. THE FOOTAGE IS FROM FOXNEWS ON THE DAY THAT IT ALL HAPPENED).

CAN YOU SEE THE ADVANCING ARMY THUNDERING DOWN THE BUILDING?





BUT IT HAD TO END SOMETIME. FORTUNATELY, I SUPPOSE, THE MAGICAL EXPLODING CONCRETE VIRUS DIDN'T INFECT THE EARTH BENEATH THE TOWERS, AND CAUSE THE EARTH TO ALSO EXPLODE. THAT WOULD HAVE BEEN EVEN WORSE FOR EVERYONE!

YOU CAN SEE WHAT REMAINED AFTER THE BUILDINGS, WELL...WENT AWAY.



NOT MUCH LEFT, OF ALL THAT THICK STEEL, ALL THOSE CONCRETE FLOORS.

NOTHING AT ALL OF THE GIANT STEEL CORE, THE SECOND BUILDING INSIDE THE FIRST, WHICH WAS DESIGNED TO HOLD THE BUILDING UP IN CASE OF EXTERIOR DAMAGE.

IN FACT, VERY SOON, THERE WAS NOTHING LEFT AT ALL, BECAUSE FOR SOME REASON, THE U.S. GOVERNMENT HAD ALMOST EVERY PIECE OF BROKEN AND TWISTED AND SPLINTERED STEEL PUT ON BOATS...

...AND SHIPPED TO CHINA AND OTHER FOREIGN COUNTRIES...

NOTHING LEFT OF THE BUILDING BENEATH THE POINT OF AIRPLANE IMPACT.

...WHERE IT WAS MELTED DOWN - RECYCLED.

I'M ALL FOR RECYCLING, BUT SHOULDN'T THEY HAVE WAITED A LITTLE WHILE TO SEE IF EXAMINING THE PIECES OF METAL MIGHT HAVE GIVEN A CLUE TO WHAT CAUSED THE EXPLODING-CONCRETE VIRUS?

I THINK SO.....

WELL, IT'S ALL A TERRIBLE STORY, AN UNPLEASANT STORY, A STORY NO ONE WANTS TO HEAR, OR TALK ABOUT.

EXCEPT THAT A LOT OF PEOPLE DO TALK ABOUT IT.



FOR EXAMPLE, THIS GUY TALKS ABOUT IT:

HE WAS AN ARCHITECT, IS AN ARCHITECT, I MEAN, WHO BUILDS STEEL BUILDINGS.

• *The Steel Frame Structure was almost completely dismembered.*

• *Cut up and ready for shipment*



HE'S PRETTY SURE THAT HE HAS FIGURED OUT WHAT CAUSED THE TWIN TOWERS TO BECOME INFECTED WITH THE EXPLODING CONCRETE VIRUS.



HE LIKES TO ASK  
THIS QUESTION:



Does this look like a gravitational collapse??

WTC North Tower  
Broken Down  
to Shippable Lengths

400

YOU CAN LOOK  
HIM UP, IF YOU  
WANT.

HIS NAME IS  
RICHARD GAGE.

HE HAS A WEBSITE.

HERE IT IS: [HTTP://  
WWW.AE911TRUTH.ORG/](http://www.ae911truth.org/).

I HOPE HE DOESN'T  
CATCH THE  
DISAPPEARING  
CITIZEN VIRUS.

THAT'S HAPPENED  
FROM TIME TO TIME  
TO PEOPLE WHO  
TALK TOO MUCH  
ABOUT UNPLEASANT  
THINGS.

IN THE MEANTIME, MAYBE YOU CAN TELL ME:

DID THESE  
BUILDINGS  
FALL  
DOWN, OR  
DID THEY  
BLOW UP?

THIS HAS BEEN.....

# Collapse or Explosion?

A PHOTO ESSAY BY LIAM SCHEFF

[HTTP://LIAMSCHEFF.COM](http://LIAMSCHEFF.COM)

